



Oppsteiger:
7,2m²
Steiger volgens
Z.2.4.4

Probleem
beschrijving
volgens details

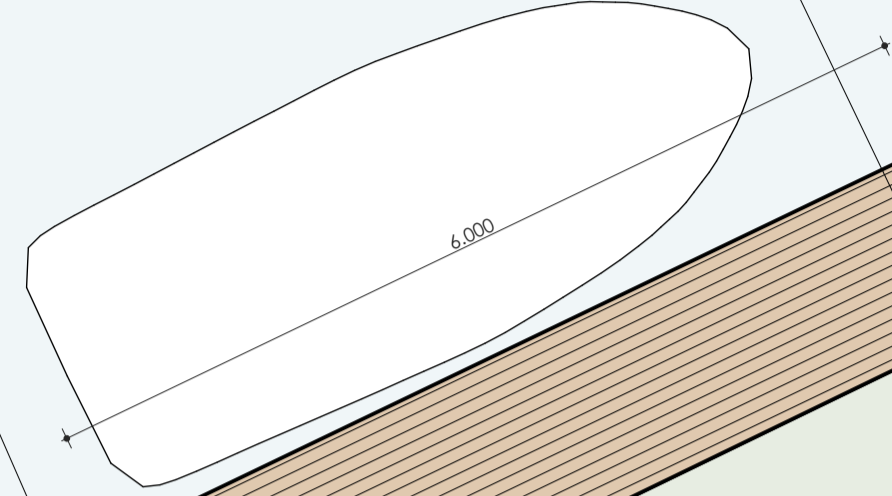
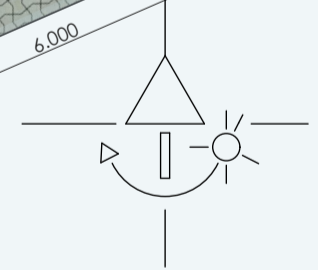
Inheemse beplanting
Berggras

Inheemse beplanting
bloemenweide
Oppervlakte perceel: 195m²
Oppervlakte woning 30m² (20% van
kavel) op meer dan max. van 30m²
Volgens regeling
6.3.1.A

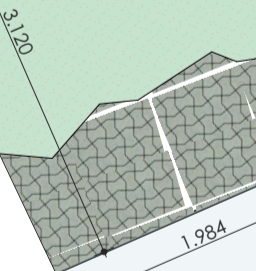
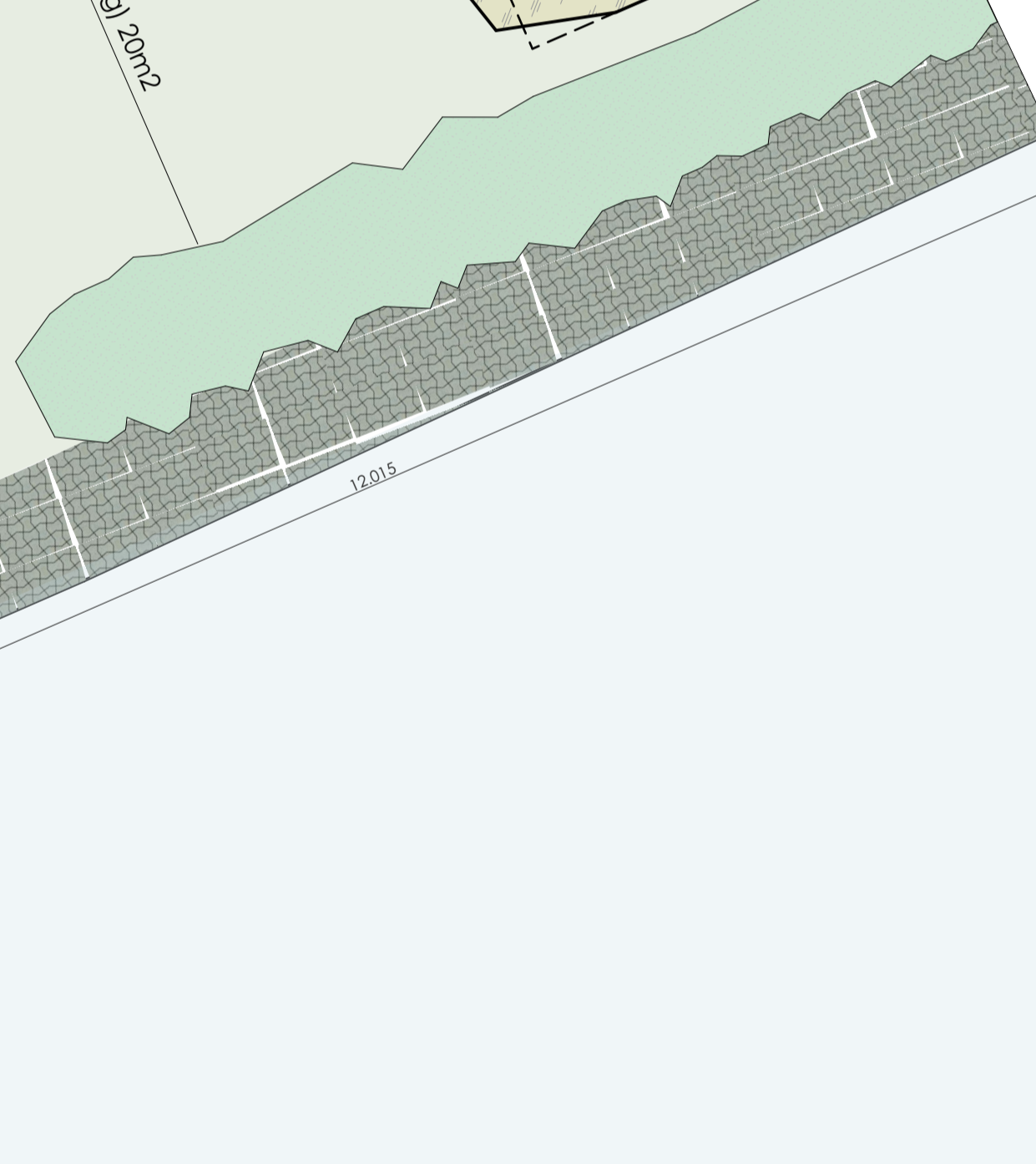
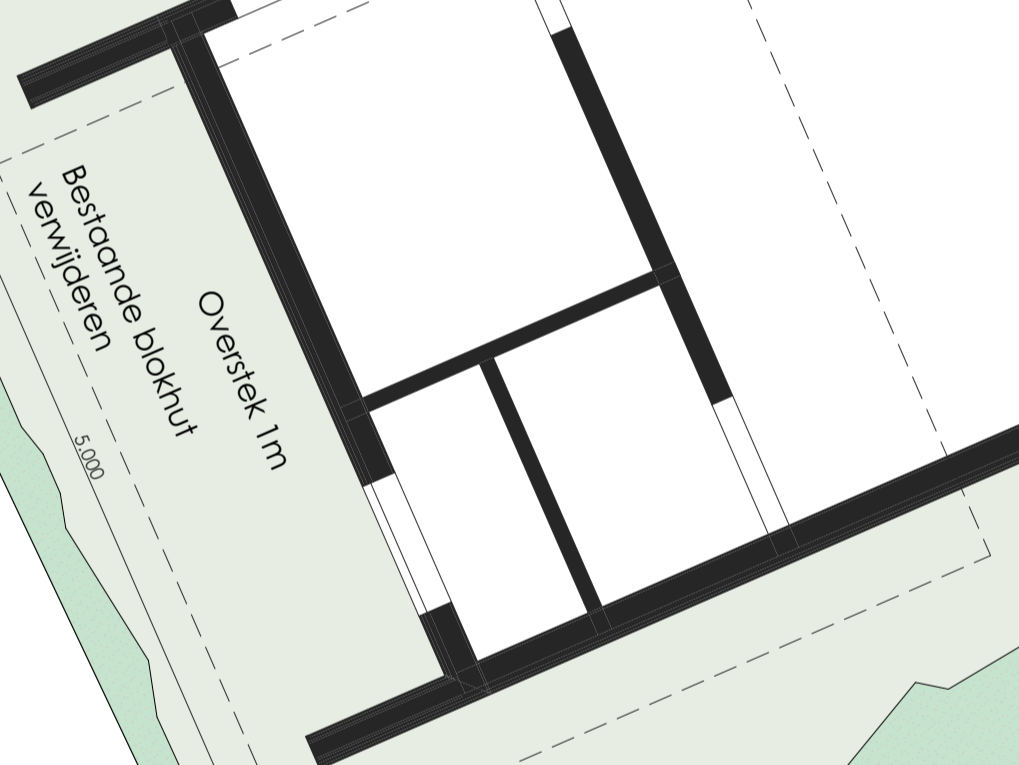
Opp. vloer: 19,5m²
(10% van totaal opp. kavel
Volgens regeling: 6.3.1.B

Inheemse beplanting:
Opp. gras: 1,40m²
Ligustrum vulgare (haag) 20m²

Bestaande blokt
Verwiden
Overstek 1m



Overstek 1m



6.000

1.700

1.315

3.000

3.750

3.200

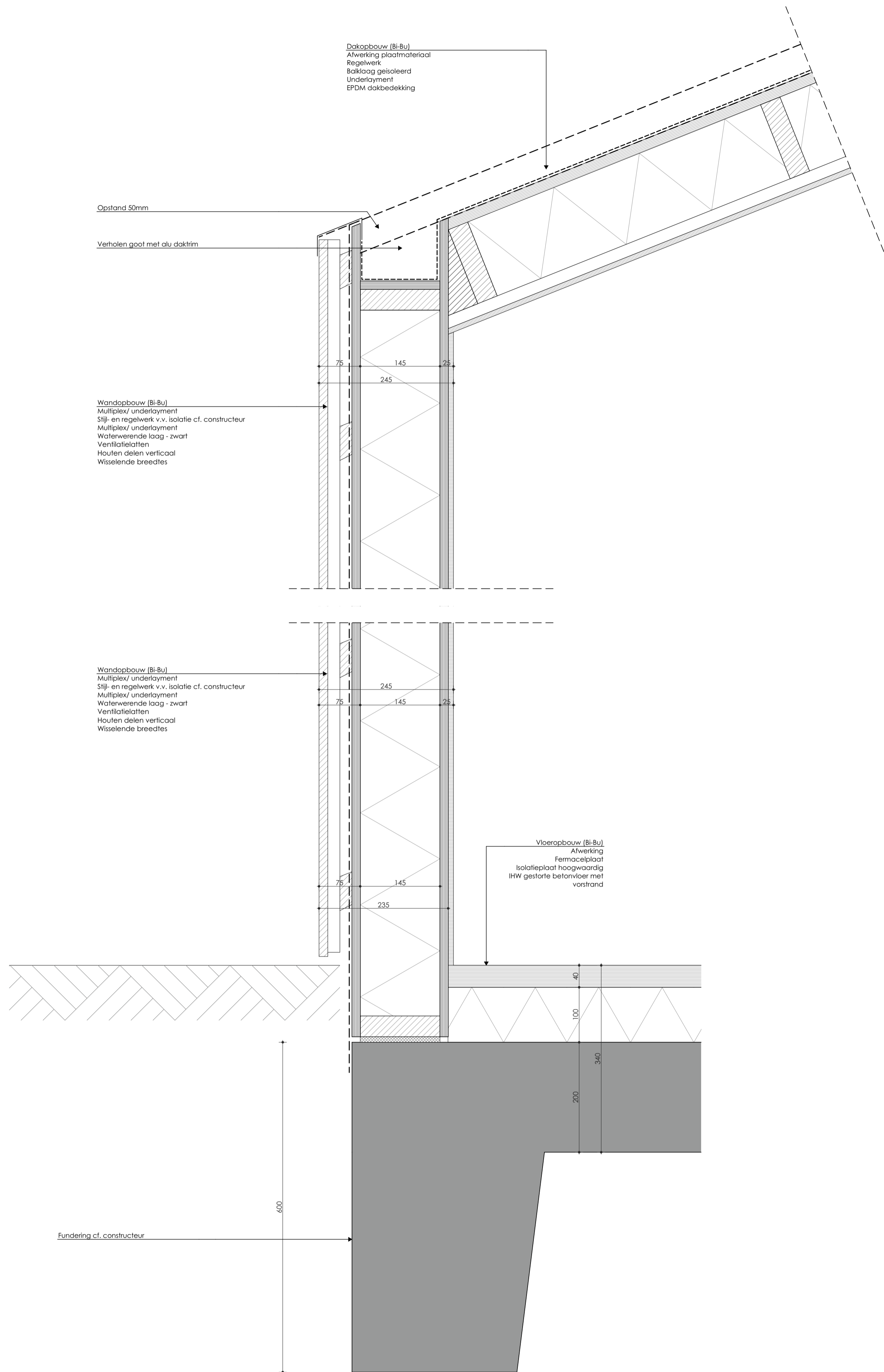
12.015

5.000

1.072

3.200

1.984



Details verticaal 1:5

